

14&U

2001 14th. Street N.W.
Washington D.C. 20009

WASHINGTON D.C.,
CONVENIENT LOCATION
A PRIME AND UPSCALE
COMMERCIAL BUILDING

FOR LEASE



LEASABLE SIZES:

Basement: 3,150 Square Feet

First Floor: 3,150 Square Feet

Second Floor: 3,150 Square Feet

mezzanine Floor: 1,150 plus a Terrace

Ceiling Heights: from 11' ~ 15' clear

Zoning: C-2-B

For more information
or to arrange a tour
Please contact:

Ken Noroozi
Cell: 301.728.6037
ken@viprealtors.net



11820 Parklawn Dr.
Suite 403
Rockville, MD 20852

Voice: 301.984.0101
Fax: 301.984.7777

Remarks:

New building to be adjoined to the existing historical building.
The facades will maintain the original historical elegance.
An exclusive location in the heart of rapid growing 14 & U corridor.

Multi uses of basement area with convenient walkout access to U Street, together with first floor will be a dream place for Clubs or Specialty Dining or other retail outlets.
Combination of second floor and the uniquely designed mezzanine makes an ideal spot for specialty Restaurants with 1,150 square feet of outdoor dining area.

(Every floor is separately metered)

ALL SPACES ARE DESIGNED TO BE BUILT TO SUIT

14&U

2001 14th. Street N.W.
Washington D.C. 20009

WASHINGTON D.C.,
CONVENIENT LOCATION
A PRIME AND UPSCALE
COMMERCIAL BUILDING

FOR LEASE

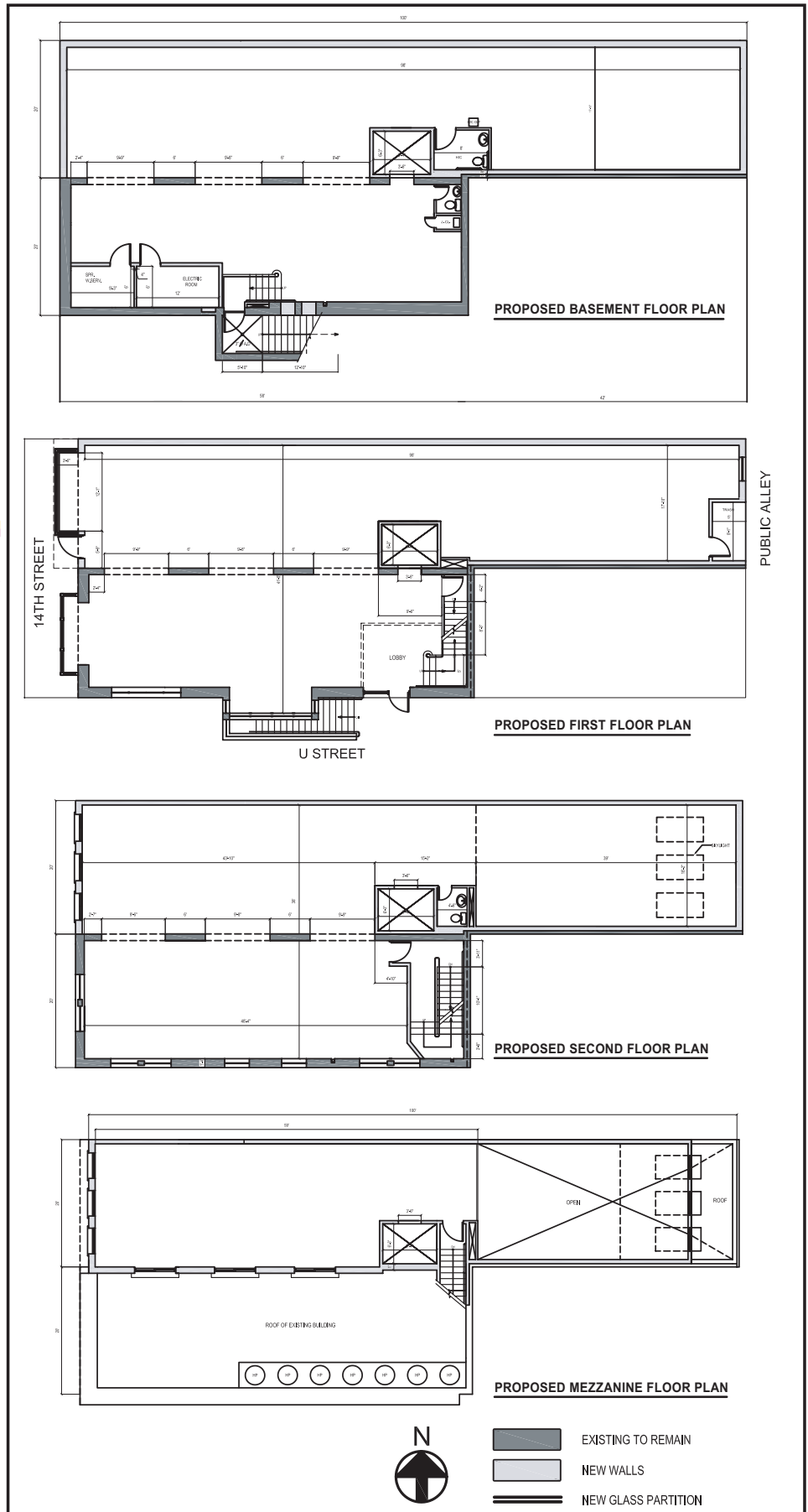
For more information
or to arrange a tour
Please contact:

Ken Noroozi
Cell: 301.728.6037
ken@viprealtors.net



11820 Parklawn Dr.
Suite 403
Rockville, MD 20852

Voice: 301.984.0101
Fax: 301.984.7777



The information contained herein has been given to us by the owner of the property or obtained from sources we deem reliable. No warranty or representation, express or implied, is made as to the accuracy of the information contained herein, and same is submitted subject to errors, omissions, change of price, sale, lease or other conditions, withdrawal without notice and to any special listing conditions imposed by our principals.

14&U

2001 14th. Street N.W.
Washington D.C. 20009

WASHINGTON D.C.,
CONVENIENT LOCATION
A PRIME AND UPSCALE
COMMERCIAL BUILDING

FOR LEASE



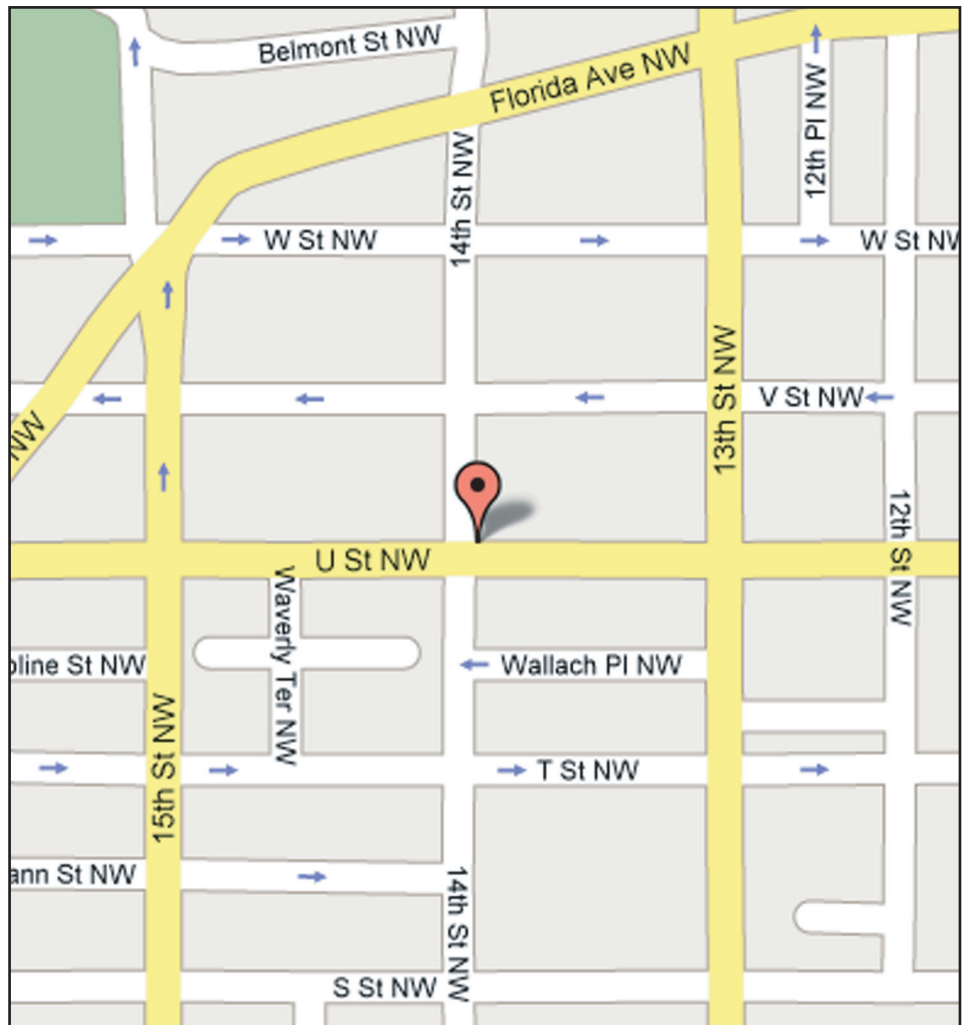
For more information
or to arrange a tour
Please contact:

Ken Noroozi
Cell: 301.728.6037
ken@viprealtors.net



11820 Parklawn Dr.
Suite 403
Rockville, MD 20852

Voice: 301.984.0101
Fax: 301.984.7777



The information contained herein has been given to us by the owner of the property or obtained from sources we deem reliable. No warranty or representation, express or implied, is made as to the accuracy of the information contained herein, and same is submitted subject to errors, omissions, change of price, sale, lease or other conditions, withdrawal without notice and to any special listing conditions imposed by our principals.